

HY-VTF306BE Forward Scattering Visibility Sensor

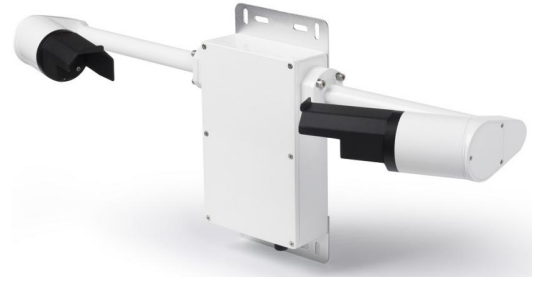
Introduction

HY-VTF306BE Visibility detector measures atmospheric visibility by determining the amount of light scattered by different particles (smoke, dust, haze, fog, rain or snow) in the air that pass through the optical sample volume. When the air is clear, very little light is scattered since there are few particles in the sample volume resulting in a small signal received by the sensor. As the number of particles in the sample volume increases, the amount of light detected by the receiver also increases. In other words, the received signal strength is inversely proportional to the visibility.

Features

Especially built for Traffic Applications
10m to 80km measurement range
Low maintenance requirement
Not affected by local light sources
Hood heating for use in extreme environments

Site photo



Specification

Visibility: 10 ~ 10 000 meters
80 000 meters is optional with extra cost
Resolution: 1 meter
Accuracy: $\pm 10\%$

Optional with extra cost:

Rain accumulation: 0~9999999 mm

Rain intensity: 0~500 mm/hr

Accuracy: $\pm 10\%$

Present Weather

Identifiable: drizzle, medium rain, heavy rain, snow, mist, heavy fog

Serial Output: RS232 or RS485

Analog output: 4-20mA or 0-5V (with extra cost)

Formats: ASCII active output,
MODBUS-RTU, SDI-12

Baud rate: 1200 ~ 115200 bps

Power Requirement:

Sensor: 12-24 VDC 3.8W

Environmental:

Operating Temperature: $-40 \sim +60^{\circ}\text{C}$

Protection Class: IP65

Dimensions: 252x700x146 mm

Weight: 3.5kg

Shipping Weight: 20 kg



Hongyuv Technology Co., Ltd.
Xinye Road 4th, Piddu Zone, Chengdu City, Sichuan Province, China
TEL / Whatsapp: +86 18681878709 Skype: stefan@hongyuv.com
Email: stefan@hongyuv.com Wechat: wswgenius
Website: www.hongyuv.com/en