[illegible]

See Parts List for a complete listing of optional accessories.

8234R

Specifications on this page are subject to change without notice. Every attempt has been made to ensure the accuracy of this drawing; however, Traxxas cannot be held responsible for typographical or other errors.

REV 181130-R07

See Parts List for a complete listing of optional accessories.

8234R

Specifications on this page are subject to change without notice. Every attempt has been made to ensure the accuracy of this drawing; however, Traxxas cannot be held responsible for typographical or other errors.

REV 181130-R07

See Parts List for a complete listing of optional accessories.

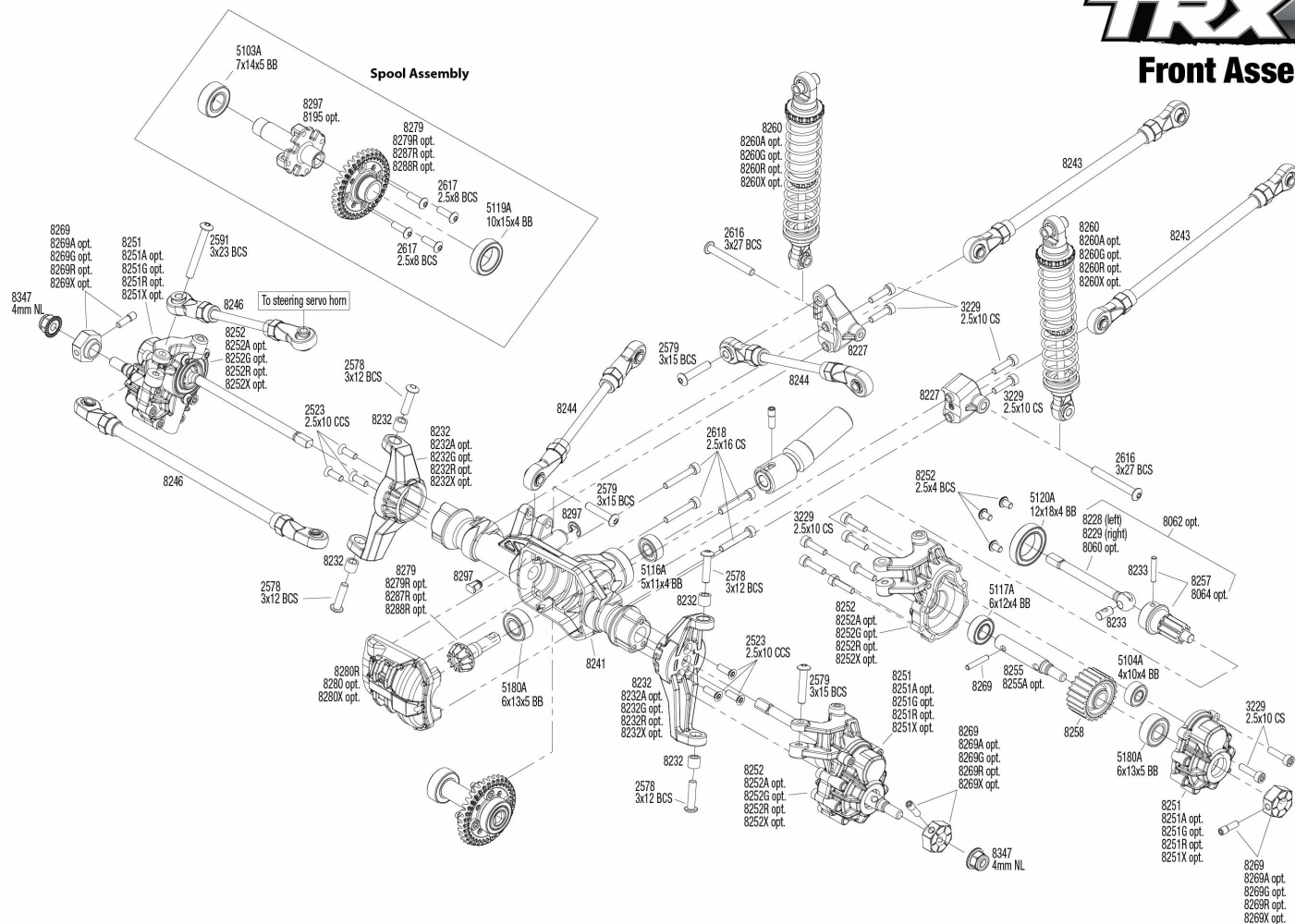
8234R

Specifications on this page are subject to change without notice. Every attempt has been made to ensure the accuracy of this drawing; however, Traxxas cannot be held responsible for typographical or other errors.

REV 181130-R07

TRX4[®]

Front Assembly



TRAXXAS

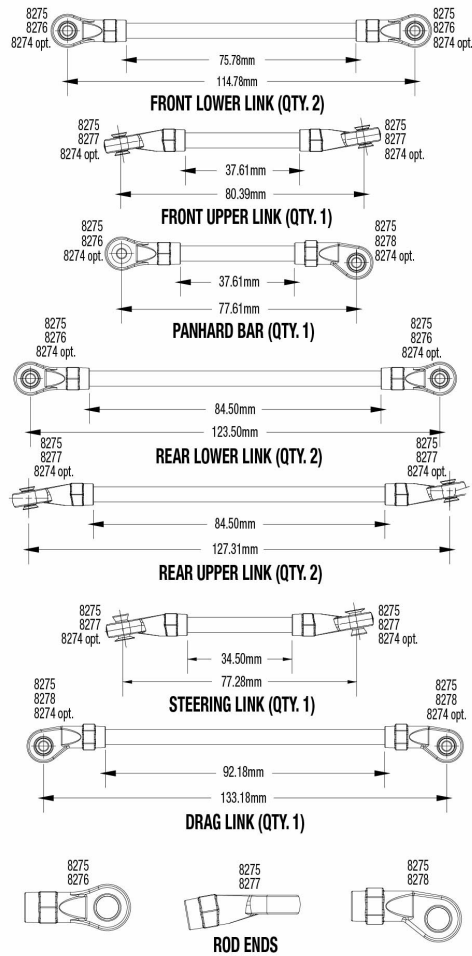
See Parts List for a complete listing of optional accessories.

Specifications on this page are subject to change without notice. Every attempt has been made to ensure the accuracy of this drawing; however, Traxxas cannot be held responsible for typographical or other errors.

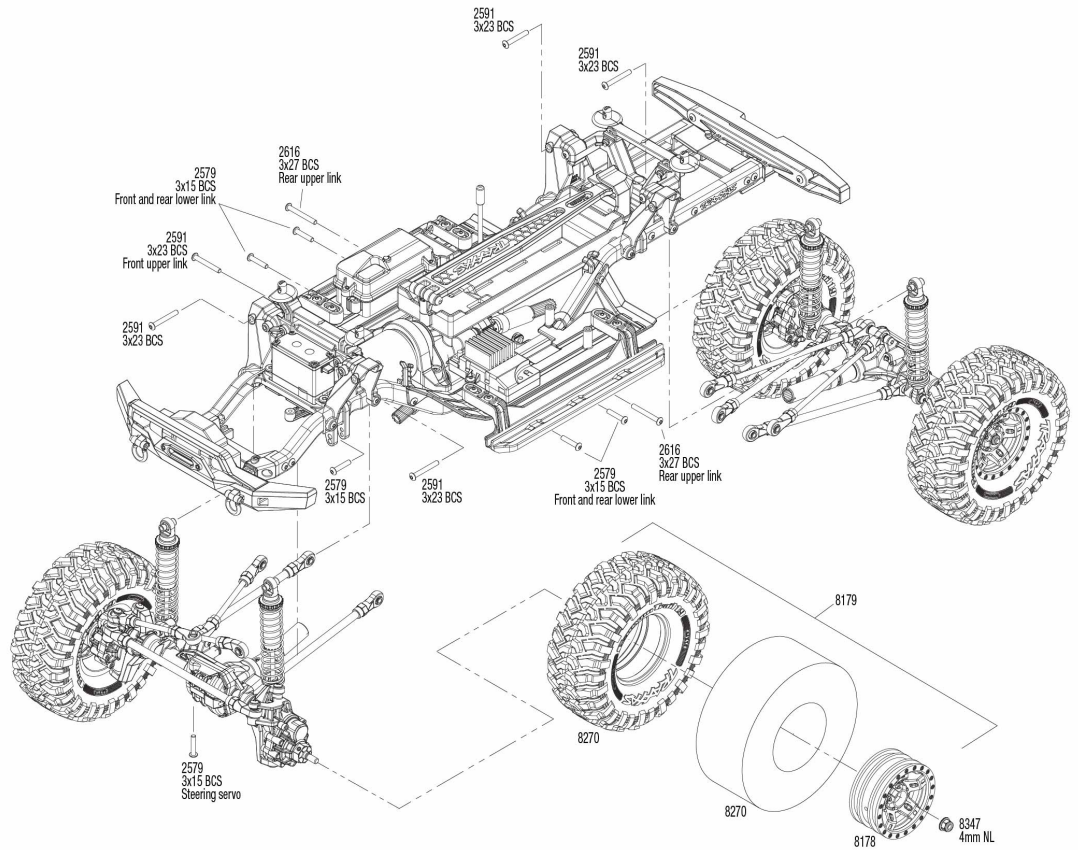
REV 181130-R07



Link Dimensions



Modular Assembly



See Parts List for a complete listing of optional accessories.

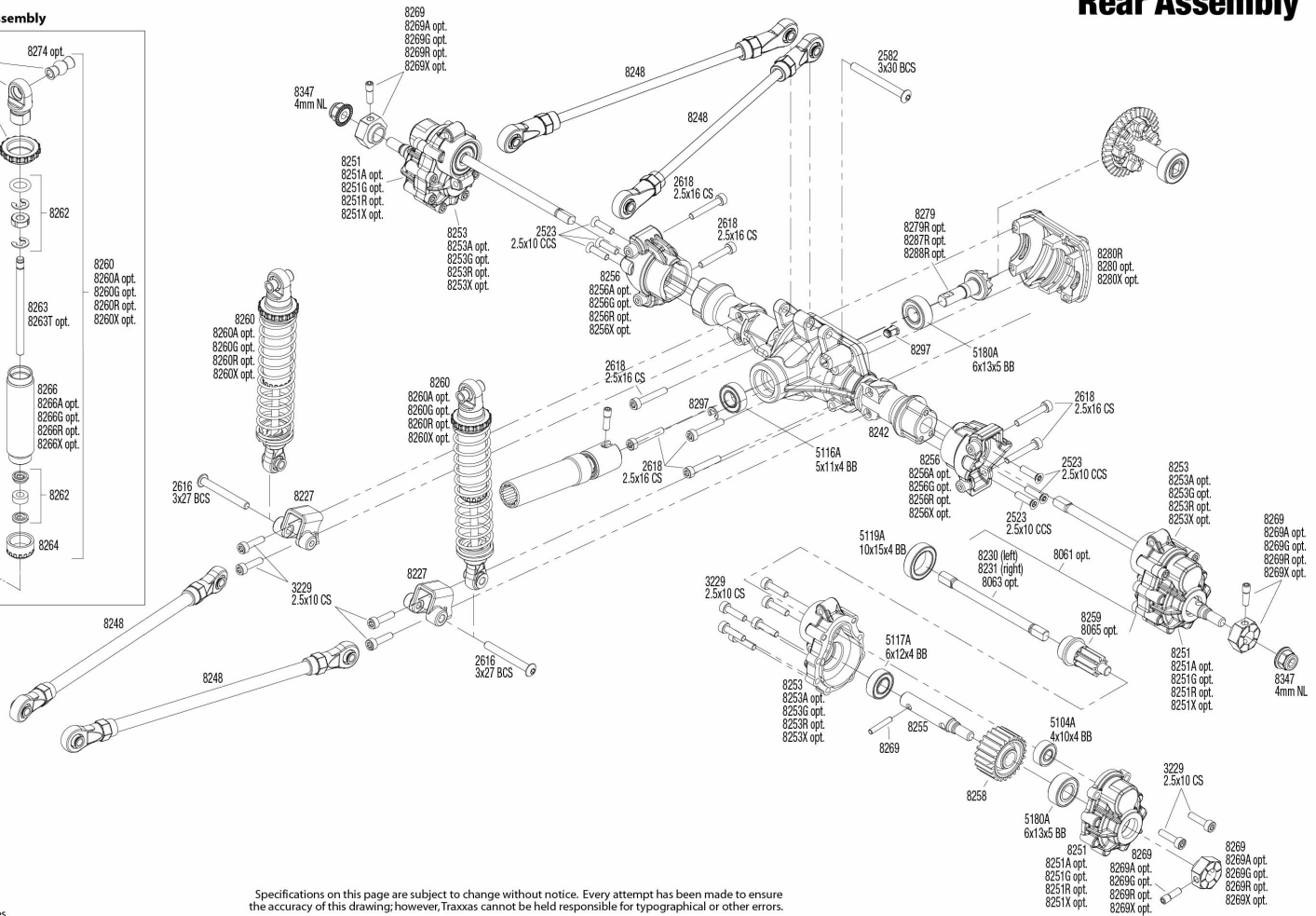
REV 181130-R07
Specifications on this page are subject to change without notice. Every attempt has been made to ensure the accuracy of this drawing; however, Traxxas cannot be held responsible for typographical or other errors.



TRX4
Rear Assembly

Exploded view diagram of the 8260 optical assembly. The diagram shows the following components and their part numbers:

- 8264**: Lens or cap at the top left.
- 8274 opt.**: Optical component at the top right.
- 8262**: A series of small spacers or washers in the middle section.
- 8263**: A long central tube or shaft.
- 8263T opt.**: Optical component at the bottom of the central tube.
- 8266**: A large cylindrical component at the bottom.
- 8266A opt.**, **8266G opt.**, **8266R opt.**, **8266X opt.**: Variants of the large cylindrical component.
- 8264**: Lens or cap at the bottom left.
- 8264**: Lens or cap at the bottom right.
- 8262**: A series of small spacers or washers at the bottom right.
- 8043 (front & rear)**: A coiled spring on the left side.
- 8040 opt.**, **8041 opt.**, **8042 opt.**, **8044 opt.**, **8045 opt.**: Variants of the coiled spring.



See Parts List for a complete listing of optional accessories.

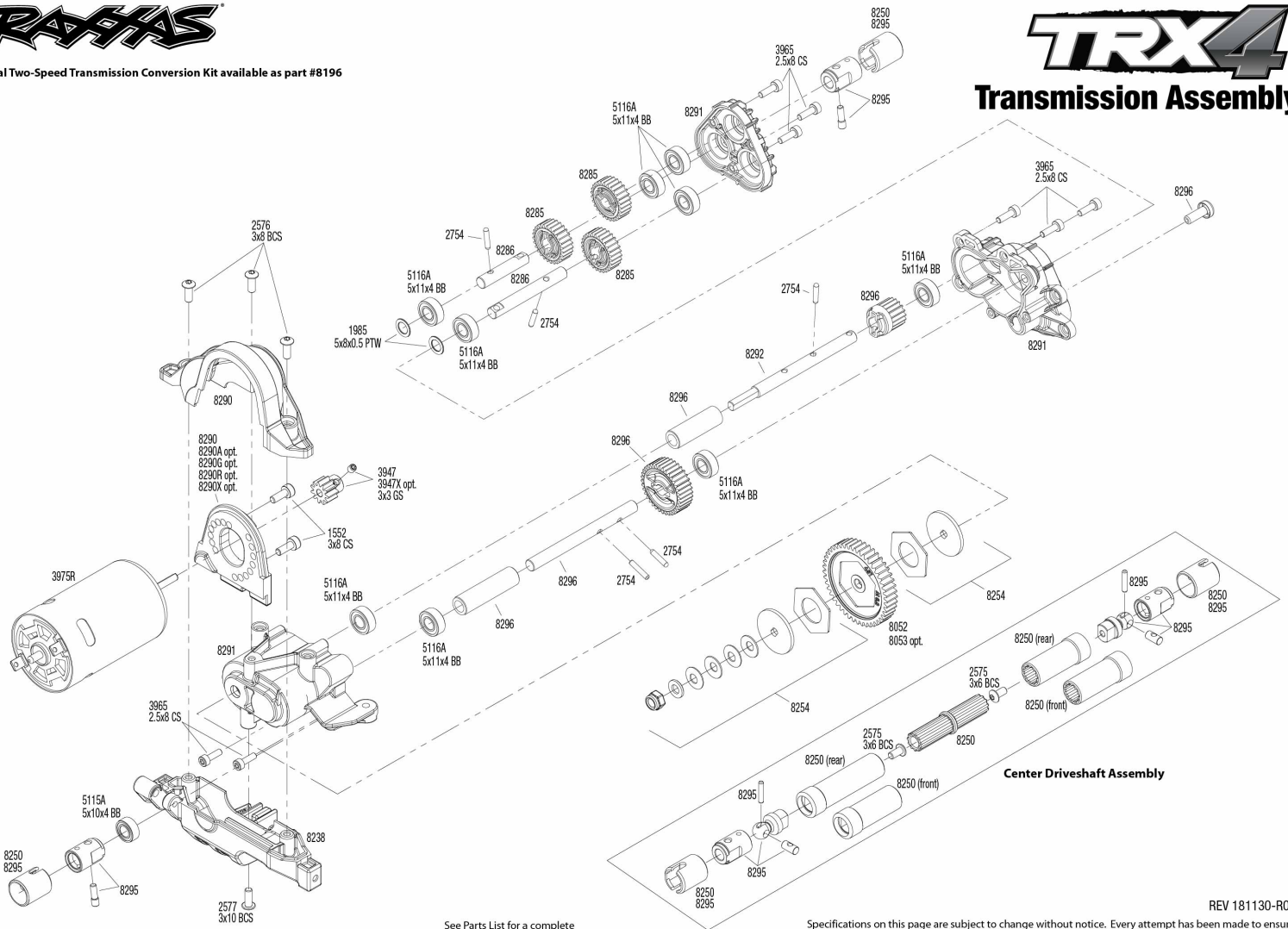
Specifications on this page are subject to change without notice. Every attempt has been made to ensure the accuracy of this drawing; however, Traxxas cannot be held responsible for typographical or other errors.



Optional Two-Speed Transmission Conversion Kit available as part #8196



Transmission Assembly



REV 181130-R07

Specifications on this page are subject to change without notice. Every attempt has been made to ensure the accuracy of this drawing; however, Traxxas cannot be held responsible for typographical or other errors.